

HON



Ignition[®]
Seating

The perfect fit.

Designed around you.
And you. And you.

You are one of a kind. So shouldn't your chair be designed with that in mind? We think so. Not only does Ignition fit your height and weight to a tee, it offers sophisticated materials for pinpoint comfort just where you want it. With a great mix of back heights and styles to choose from, it works everywhere. Just like you.



Shown with Voi® desk, Preside® table, Empower® workstations and Flock® minis.





Shown with Voi® desk.

Mesh Back



Mesh well together.

The 4-way stretch mesh uses your weight to flex and move for a softer, more personal fit. Because we all know that the best ideas happen when you really stretch yourself.



ReActiv® Back



Be proactive with ReActiv.

Look good and feel even better. Ignition's ReActiv back design delivers zonal comfort to perfectly balance the right amount of support. Like a good friend.





Shown with Contain® storage.



Shown with Voi® desk.



Flexible Inner Structure
Provides targeted support and superior comfort within the slim silhouette of Ignition 2.0

Upholstered Back

A material world.

Weave in comfort with style when you choose an Ignition upholstered chair. The 2.0 slim-profile chair, with an optional adjustable lumbar, cradles your back to provide support without the bulk. The original Ignition models feature quick-adjust backs that change to six vertical positions.



Chair Models

Mesh Back



4-Way Stretch
Mid-back



4-Way Stretch
Low-back



4-Way Stretch
Task Stool



4-Way Stretch
Multi-purpose
Stacking



4-Way Stretch
Multi-purpose
Sled Base



4-Way Stretch
Café Stool



Mid-back



Low-back



Task Stool

ReActiv Back



Mid-back



Low-back



Task Stool



Multi-purpose
Stacking



Multi-purpose
Sled Base



Café Stool

Upholstered Back



Slim-Profile
Mid-back



High-back



Mid-back



Low-back



Task Stool



Café Stool



Multi-purpose
Stacking



Multi-purpose
Sled Base



Single Seat
Lounge



Big & Tall



Bariatric Lounge

Options

Seat Controls



Synchro-Tilt



Synchro-Tilt with Seat Slider



Advanced Synchro-Tilt



Advanced Synchro-Tilt with Back Angle



(Task Stool) Limited Synchro-Tilt or Limited Synchro-Tilt with Seat Slider

Lumbar Options



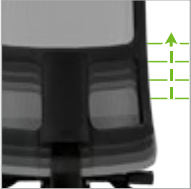
Adjustable Lumbar

Moves up and down to increase lower back comfort on Ignition 2.0 mesh and ReActiv models.



Integrated Lumbar

Moves up and down to increase lower back comfort on Ignition 2.0 upholstered models.



Quick Adjust Back Adjustment

Original upholstered and standard mesh task seating adjusts to six different vertical positions for a custom fit.

Arms



Adjustable T-Arms
Black or Titanium



Fixed Arms
Polished Aluminum, Black, or Titanium

Bases



Standard
Black or Titanium



Polished Aluminum

Some options only available on select models.



"Ignition has been a bestseller for years, so when evolving it to meet today's needs, we didn't want to lose the elements that have made it so successful. Instead, we added new comfort adjustments, 4-way stretch mesh options and other enhancements that made it an even better fit for the new work day."

Wolfgang Deisig & Nils Köhn
Deisig Design - Designers of Ignition

HON.

Make your space work.

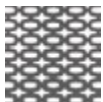
The HON Company
200 Oak Street, Muscatine, IA 52761
800.833.3964 | Check out hon.com

© 2020 The HON Company, Form No. H5680 (5/20)
To view the registered and unregistered trademarks owned and used by The HON Company, visit hon.com/protected-marks. Models, upholstery and finishes are subject to change without notice.

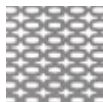


Finishes

ReActiv

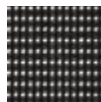


Charcoal



Titanium

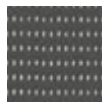
Mesh



Black
4-Way
Stretch



Fog
4-Way
Stretch



Charcoal
4-Way
Stretch



Chai
4-Way
Stretch



Navy
4-Way
Stretch



Standard
Black

Frames/ Arms/Bases



Black



Titanium

See HON Pricer for complete product information.



Customize your own Ignition at hon.com/configurator

For more information, visit hon.com/ignition